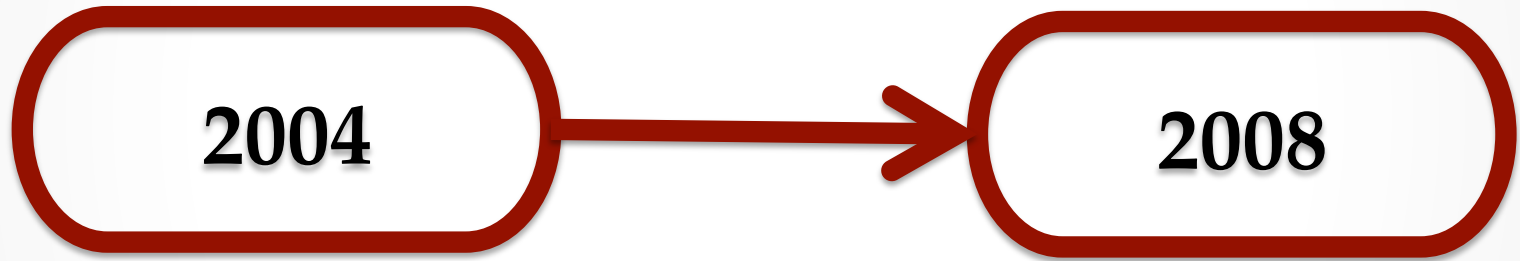


# **Developing an Interactive Tool to Assist in Compliance with the NIH Public Access Policy**

**Merle Rosenzweig, Tyler Nix, Chase Masters**

# THE POLICY



# THE POLICY STATEMENT:<sup>\*</sup>

*The Director of the National Institutes of Health ("NIH") shall require in the current fiscal year and thereafter that all investigators funded by the NIH submit or have submitted for them to the National Library of Medicine's PubMed Central an electronic version of their final, peer-reviewed manuscripts upon acceptance for publication, to be made publicly available no later than 12 months after the official date of publication: Provided, that the NIH shall implement the public access policy in a manner consistent with copyright law."*

*\* <https://publicaccess.nih.gov/policy.htm>*

# COPYRIGHT

- The author owns it unless signed away.
- What if the publication falls under the Policy?
- What if author instructions does not mention compliance?

# FIRST ITERATION OF A PROCESSING MAP

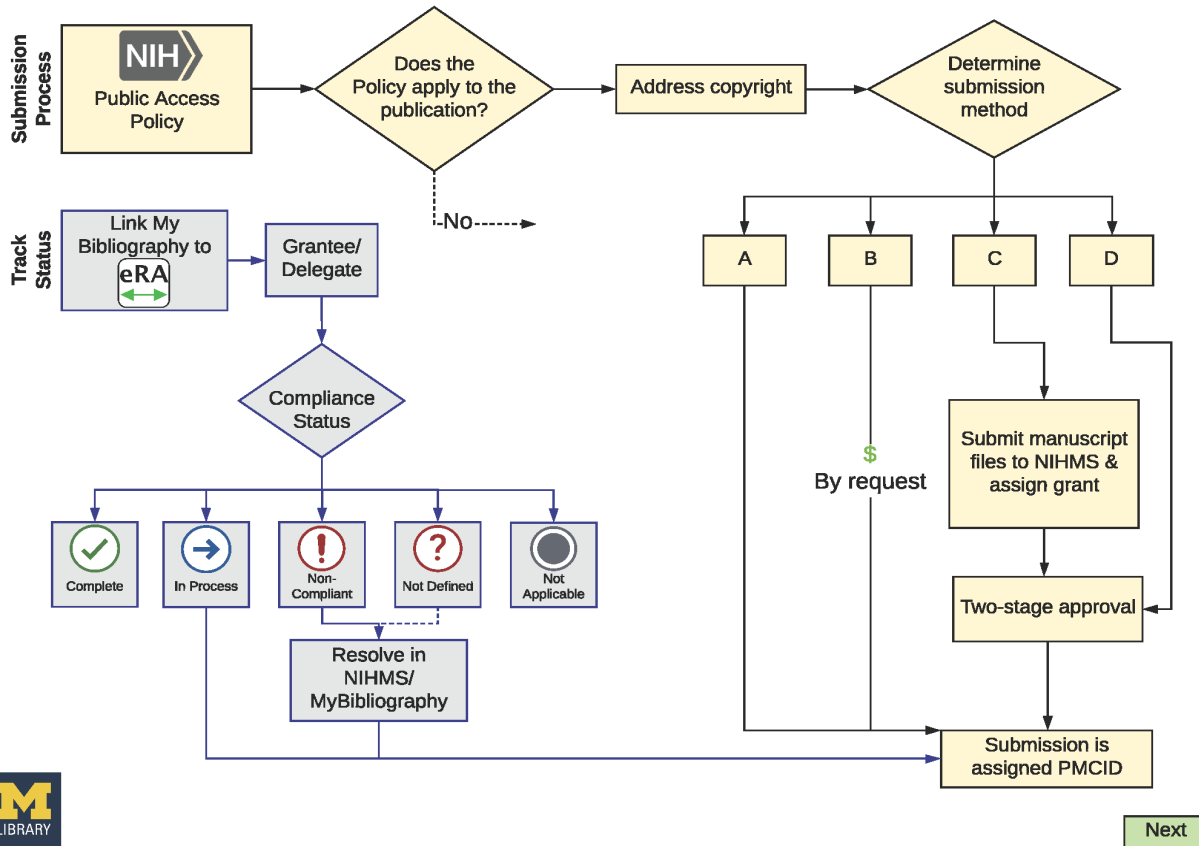
## NIH Public Access Policy (NIHPAP) 101

### Table of Contents:

- [Submission Methods](#)
  - [Method A](#)
  - [Method B](#)
  - [Method C](#)
  - [Method D](#)
- [NIHMS](#)
- [My NCBI](#)

# SECOND ITERATION OF A PROCESSING MAP

# NIH Public Access Policy Compliance





# THANK YOU

Author contact:

Merle Rosenzweig *oriley@umich.edu*

Tyler Nix *tnix@umich.edu*

Chase Masters *mastersc@umich.edu*